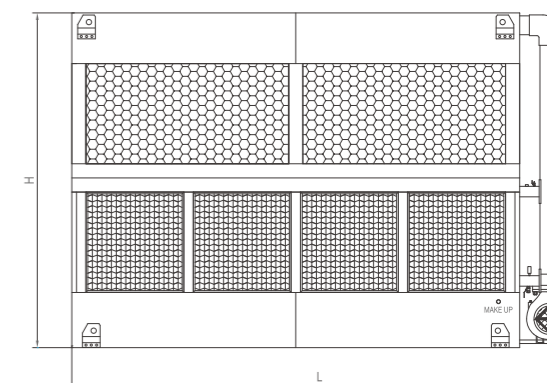
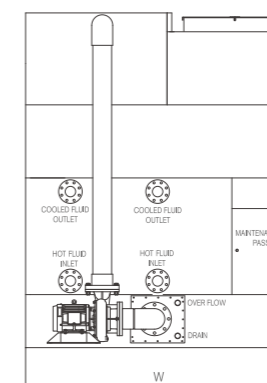
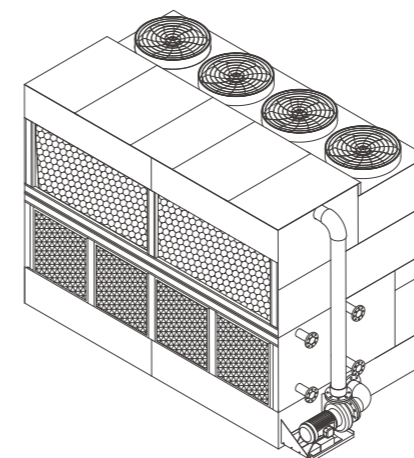
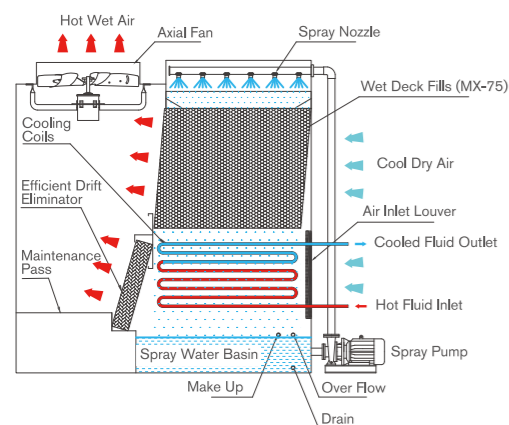




GHM SERIES



闭式横流冷却塔 CLOSED CROSS FLOW

GHM 系列，冷却能力范围 30~366 名义吨，可多台组合满足更大冷却需求，外壳采用覆镁铝锌板或不锈钢板，换热盘管选用不锈钢或紫铜，填料使用 PVC。所有原材料均达到工业级要求，具有超强防腐性能。GHM 系列冷却塔换热效率高。

GHM Series are of capacities from 30 to 366 nominal tons, can work in series as a group for larger capacities. Casing made in special Mg-Al-Zn alloy coated steel or stainless steel, Heat exchange coils made in stainless steel or red copper, Wet deck fills made in PVC. All raw materials are of high industrial grade, with superior corrosion resistant features. GHM towers are designed of high efficiency.

工作原理

GHM 系列属于诱导通风型横流冷却塔。在工作中，干燥的冷空气从塔侧进风格栅进入，穿过喷淋水，横向经过冷却盘管和填料，变成湿热空气，最后由冷却塔顶部风机排到大气中。在此过程中，持续进行热交换并带走闭式循环中工作流体的部分热量。

WORKING THEORY

GHM series belong to induced draft type cross flow cooling towers. During the working process, dry cool air is inlet through wide louvers on one side of the tower, then directed through the heat exchange coils and wet deck fills across the spray water, becoming wet hot air, eventually induced draught out of the tower into the atmosphere by the fans on the top. In this process, a part of heat from the fluids inside the closed loop is transferred efficiently, and removed continuously.

| 型号 Model No. | 名义吨 Nominal Flow Rate (Ton) | 风机 Fan | | 喷淋泵 Circulating Pump | | 设备接口管径 (mm) Connecting Pipe (mm) | | | 外形尺寸 (mm) Overall Dimensions (mm) | | | 重量 Weight | |
|-----------------|--------------------------------|------------------|-------------------------|-------------------------|-------------------------|-------------------------------------|----------------|-------------------|--------------------------------------|--------|--------|----------------|----------------------|
| | | 功率 Power (kW) | 风量 Air Volume (m³/h) | 功率 Power (kW) | 水量 Air Volume (m³/h) | 进/出水口 inlet/outlet | 补水口 make up | 溢流/排污 drainage | 长 L | 宽 W | 高 H | 自重 Net (kg) | 运行重量 Running (kg) |
| GHM-225 | 30 | 1.1×2 | 3.7×2 | 1.5 | 45 | DN80 | DN25 | DN40 | 2540 | 1940 | 2200 | 1020 | 1820 |
| GHM-230 | 37 | 1.1×2 | 3.7×2 | 1.5 | 45 | DN80 | DN25 | DN40 | 2960 | 1940 | 2200 | 1050 | 2020 |
| GHM-235 | 43 | 1.1×2 | 3.7×2 | 1.5 | 45 | DN80 | DN25 | DN40 | 2960 | 1940 | 2200 | 1100 | 2100 |
| GHM-340 | 49 | 1.1×3 | 3.7×3 | 2.2 | 60 | DN80 | DN25 | DN40 | 3360 | 1940 | 2200 | 1310 | 2540 |
| GHM-350 | 61 | 1.1×3 | 3.7×3 | 2.2 | 60 | DN80×2 | DN25 | DN40 | 3760 | 2240 | 2200 | 1450 | 3080 |
| GHM-365 | 79 | 1.5×3 | 5.1×3 | 2.2 | 60 | DN80×2 | DN25 | DN40 | 3360 | 1940 | 2730 | 1520 | 3200 |
| GHM-380 | 98 | 1.5×4 | 5.1×4 | 2.2 | 114 | DN80×2 | DN25 | DN40 | 4220 | 2240 | 2680 | 2050 | 4920 |
| GHM-390 | 110 | 1.5×4 | 5.1×4 | 2.2 | 114 | DN80×2 | DN25 | DN40 | 4220 | 2240 | 2680 | 2100 | 5000 |
| GHM-3100 | 122 | 1.5×4 | 5.1×4 | 2.2 | 114 | DN80×2 | DN25 | DN40 | 4220 | 2240 | 2840 | 2150 | 5100 |
| GHM-3110 | 134 | 1.5×4 | 5.1×4 | 2.2 | 114 | DN80×2 | DN25 | DN40 | 4220 | 2240 | 2840 | 2250 | 5250 |
| GHM-5125 | 152 | 1.5×4 | 5.1×4 | 3.7 | 140 | DN100×2 | DN40 | DN40 | 4740 | 2240 | 2910 | 2800 | 6800 |
| GHM-5150 | 183 | 2.2×4 | 6.3×4 | 3.7 | 140 | DN100×2 | DN40 | DN40 | 5440 | 2240 | 2910 | 3200 | 7820 |
| GHM-5175 | 213 | 2.2×4 | 6.3×4 | 3.7 | 140 | DN125×2 | DN40 | DN40 | 5440 | 2240 | 2910 | 3300 | 8000 |
| GHM-7200 | 244 | 4×4 | 16.7×4 | 5.5 | 160 | DN125×2 | DN40 | DN40 | 5840 | 2900 | 3260 | 5000 | 9000 |
| GHM-7225 | 274 | 4×4 | 16.7×4 | 5.5 | 160 | DN125×2 | DN40 | DN40 | 5840 | 2900 | 3470 | 5500 | 10000 |
| GHM-7250 | 305 | 4×4 | 16.7×4 | 5.5 | 160 | DN150×2 | DN40 | DN40 | 6420 | 2900 | 3470 | 6500 | 11500 |
| GHM-7275 | 335 | 4×4 | 16.7×4 | 5.5 | 160 | DN150×2 | DN40 | DN40 | 6420 | 2900 | 3470 | 6800 | 11800 |
| GHM-7300 | 366 | 4×4 | 16.7×4 | 5.5 | 160 | DN150×2 | DN40 | DN40 | 6420 | 2900 | 3470 | 7000 | 12000 |

NOTE

Nominal Tons are based upon temp. drop 35~29.5°C/ 95~85°F, WBT 25.5°C/ 78°F, and 0.681 m³/hr/ton.
名义吨基于工况35-29.5°C，湿球：25.5°C，流量：0.681m³/h/ton